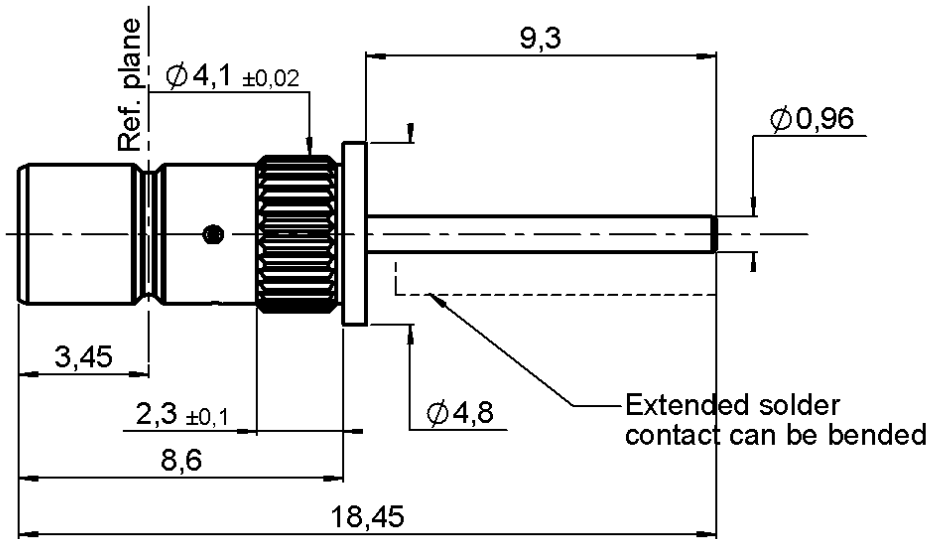


STRAIGHT PRESS MOUNT RECEPTACLE
REAR MOUNT WITH STRAIGHT TERMINAL

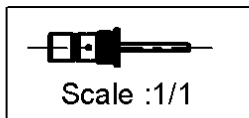
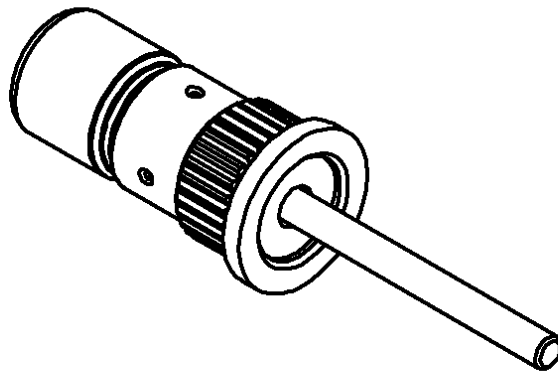
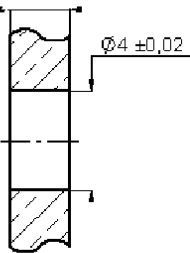
R114.505.220

Series : SMB



PANEL PIERCING

2,4 mini a 3,3 maxi



All dimensions are in mm.



COMPONENTS	MATERIALS	PLATINGS (µm)
BODY	BRASS	NICKEL 5 OVER COPPER 2
CENTER CONTACT	BRASS	GOLD 0.8 OVER NICKEL 2 OVER COPPER 1
OUTER CONTACT	-	-
INSULATOR	PTFE	-
GASKET	-	-
OTHERS PARTS	-	-
-	-	-
-	-	-

Issue : 0739 E

In the effort to improve our products, we reserve the right to make changes judged to be necessary.



**STRAIGHT PRESS MOUNT RECEPTACLE
REAR MOUNT WITH STRAIGHT TERMINAL**

R114.505.220

Series : SMB

PACKAGING

Standard	Unit	Other
1000	'W' option	Contact us

SPECIFICATION

QS9000 DELCO P/N : 09372972

ELECTRICAL CHARACTERISTICS

Impedance		50 Ω
Frequency		0-4 GHz
VSWR	1.05 +	0,0080 x F(GHz) Maxi
Insertion loss		0.03* √F(GHz) dB Maxi
RF leakage	- (57 - F(GHz)) dB Maxi
Voltage rating		500 Veff Maxi
Dielectric withstanding voltage		1000 Veff mini
Insulation resistance		1000 MΩ mini

ENVIRONMENTAL

Operating temperature	-65/+165 ° C
Hermetic seal	NA Atm.cm3/s
Panel leakage	NA

OTHERS CHARACTERISTICS

Assembly instruction

Others :

* COAXIAL TRANSMISSION LINE ONLY

MECHANICAL CHARACTERISTICS

Center contact retention		
Axial force – Mating end	10	N mini
Axial force – Opposite end	10	N mini
Torque	NA	N.cm mini
Recommended torque		
Mating	NA	N.cm
Panel nut	NA	N.cm
Mating life	500	Cycles mini
Weight	0,5300	g

Issue : 0739 E

In the effort to improve our products, we reserve the right to make changes judged to be necessary.

